

PRIME DAILY

December 26, 2025



Wall Street Reaches New Peaks on AI Rebound

The S&P 500 and Dow Jones closed at record highs on Wednesday during a light-volume Christmas Eve session.

The S&P 500 hit its first intraday record in over a month as investors rotated back into AI stocks, anticipating Federal Reserve rate cuts in 2025.

All three major indexes posted their fifth consecutive gain, with the S&P 500 on track for an 18% annual return.

The rally followed a rebound in AI-related stocks after last week's selloff, which stemmed from concerns over elevated valuations and profit-eroding capital expenditures.

Markets are pricing in approximately 50 basis points of Fed rate cuts next year, though a January cut appears unlikely.

Recent data confirms economic resilience. US and European index futures traded mixed during Asian hours.

Asian equities rose modestly today in thin trading, led by Japanese and South Korean shares, with several regional markets closed for holidays.

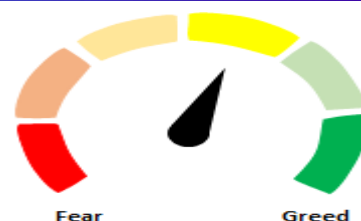
Precious metals extended their record rally on Friday, driven by geopolitical tensions and strong demand. Spot silver surged to a record high above \$75.15 per ounce, marking its fifth consecutive session of gains.

Nifty declined by 35 points on Wednesday, closing at 26,142.

The short-term trend of the Nifty remains positive, with a bullish higher-top, higher-bottom structure on the daily chart.

On the downside, the level of 26,000 is expected to act as a near-term support. On the upside, the 26240 level is likely to act as immediate resistance, followed by 26,330.

Indian markets are poised to open moderately lower in the absence of any strong cues.



Global Equity Indices

	Close	Abs. Change	% Change
Indian Indices			
Sensex	85,409	-116.1 ▼	-0.14%
Nifty	26,142	-35.1 ▼	-0.13%
Midcap	60,451	-364.8 ▼	-0.60%
Small cap	17,709	49.8 ▲	0.28%
US Indices			
Dow Jones	48,731	288.8 ▲	0.60%
S&P 500	6,932	22.3 ▲	0.32%
Nasdaq	23,613	51.5 ▲	0.22%
European Indices			
FTSE	9,871	-18.5 ▼	-0.19%
DAX	24,340	56.1 ▲	0.23%
CAC	8,104	-0.3 ▼	0.00%
Asian Indices			
Shanghai	3,960	18.7 ▲	0.47%
Hang Seng	25,819	44.8 ▲	0.17%
Nikkei	50,408	63.7 ▲	0.13%

Indices Futures

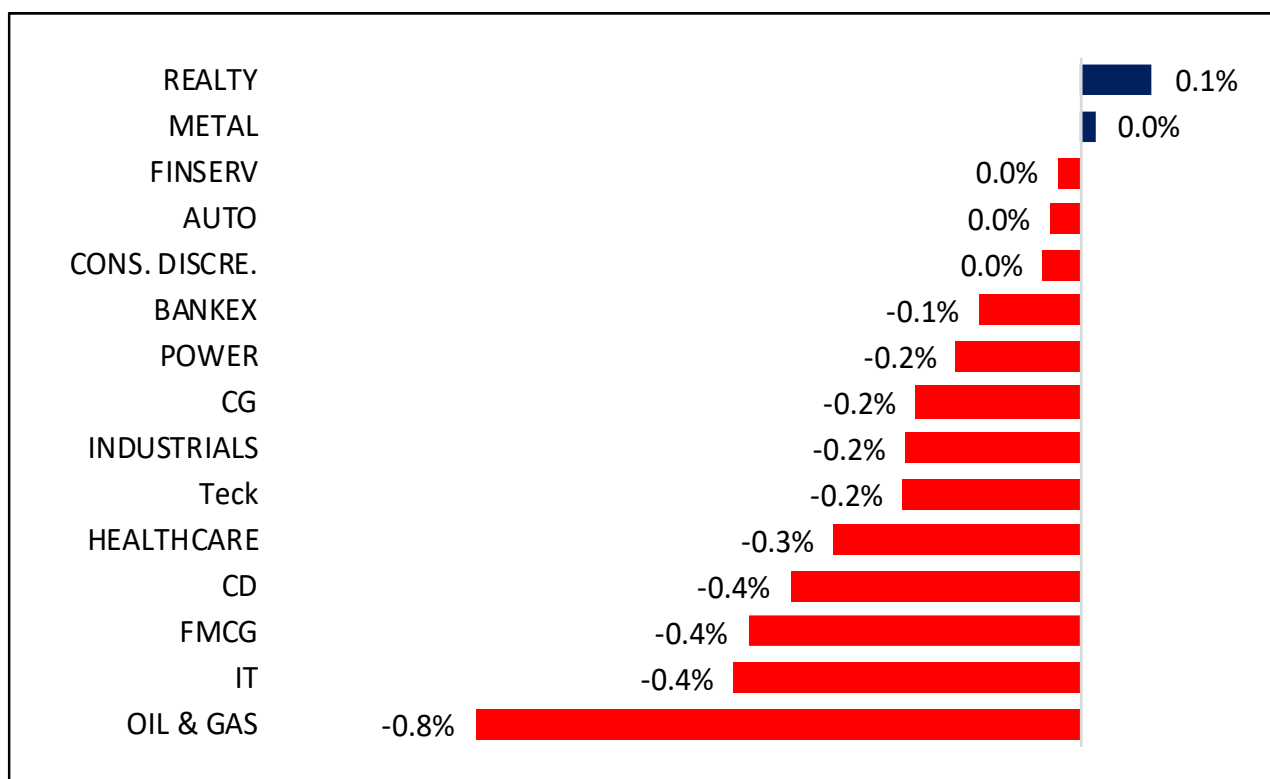
	Close	Abs. Change	% Change
IFSC Nifty			
IFSC Nifty	26,114	-63.5 ▼	-0.24%
US Indices			
Dow Jones	49,007	-22.0 ▼	-0.04%
S&P 500	6,983	0.5 ▲	0.01%
Nasdaq	25,896	15.5 ▲	0.06%
European Indices			
FTSE	9,891	-27.0 ▼	-0.27%
DAX	24,504	0.0 ▼	0.00%
Asian Indices			
Shanghai	4,669	32.4 ▲	0.70%
Hang Seng	25,835	15.5 ▲	0.06%
Nikkei	50,860	385.0 ▲	0.76%

Nifty50 Index Contributors

Top Five (Positive Contributors)		
Stock	Points	% Change
TRENT	4.9	0.02
SHRIRAMFIN	4.9	0.02
MARUTI	3.4	0.01
M&M	2.3	0.01
ULTRACEMCO	2.2	0.01

Bottom Five (Negative Contributors)		
Stock	Points	% Change
RELIANCE	-18.56	-0.07
ICICIBANK	-5.01	-0.02
SUNPHARMA	-4.37	-0.02
HINDUNILVR	-3.97	-0.02
INFY	-3.87	-0.01

BSE Sectoral Leaders & Laggards

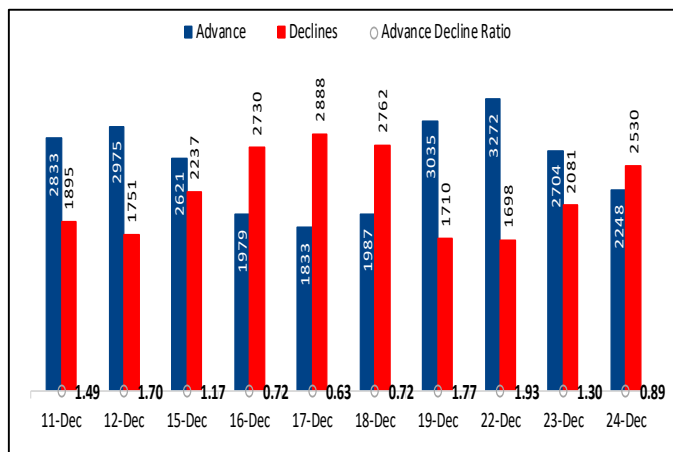


Nifty50 Index Top Pops & Drops

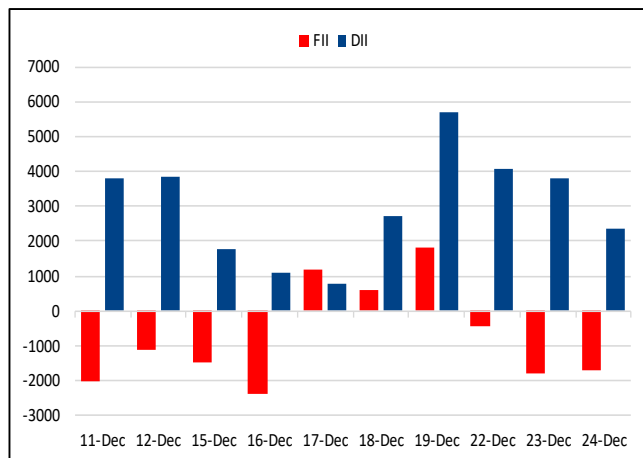
Nifty50 Top Five Gainers			
Symbol	LTP	% Change	Volume
TRENT	4289.6	2.39	960,632
SHRIRAMFIN	973.7	1.66	10,574,513
APOLLOHOSP	7172.0	1.39	351,381
BAJAJ-AUTO	9170.0	0.78	167,717
ULTRACEMCO	11764.0	0.74	182,050

Nifty50 Top Five Losers			
Symbol	LTP	% Change	Volume
INDIGO	5081.5	-1.46	980,384
DRREDDY	1265.8	-1.38	1,265,233
WIPRO	268.1	-1.23	4,694,861
ADANIENT	2222.7	-1.16	825,693
HDFCLIFE	755.4	-1.13	1,132,272

BSE Advance & Declines



Institutional Activities



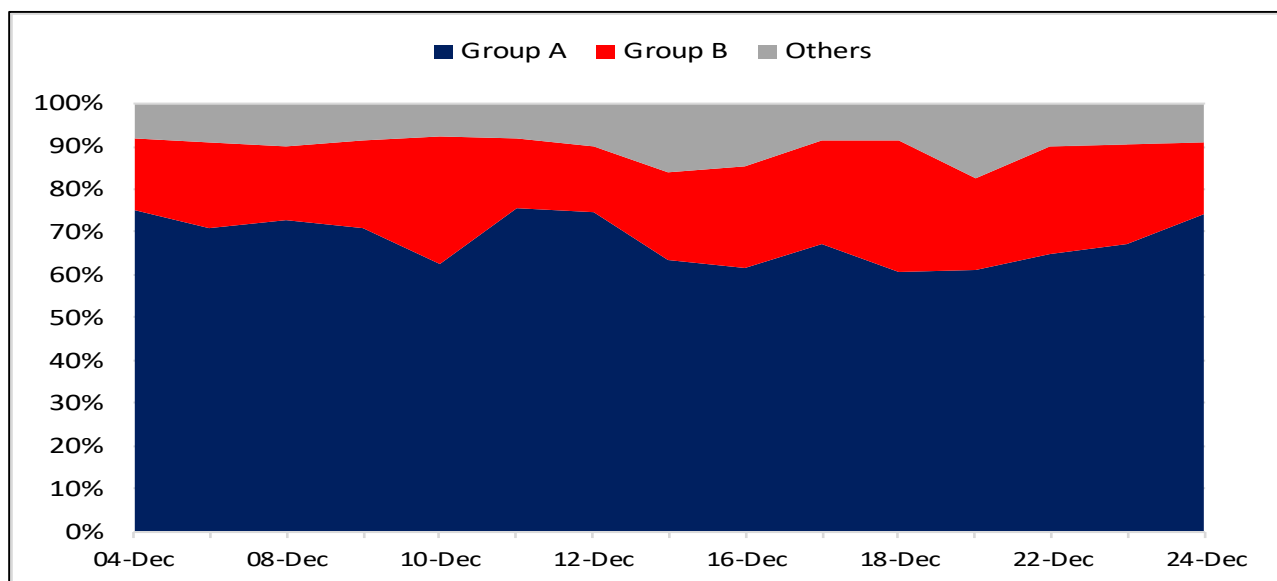
52 Week High Stocks

	24-Dec-25	23-Dec-25
BSE Universe	201	192
BSE Group A Stocks Hitting 52 Week High		
Stocks	Price	52 Week High
BHARATFORG	1449.9	1470
CUB	296.0	296.95
EICHERMOT	7312.9	7349.5
HINDCOPPER	436.5	439.3
HINDZINC	624.9	632




52 Week Low Stocks

	24-Dec-25	23-Dec-25
BSE Universe	121	103
BSE Group A Stocks Hitting 52 Week Low		
Stocks	Price	52 Week Low
ACC	1738.8	1734.65
BECTORFOOD	231.1	230.05
PCBL	306.0	304.5
RAYMOND	429.9	422.3
PATELENG	29.2	28.3

BSE Cash Market Turnover Participant-wise



News Highly Sensitive to Stock Price

Impact	Stock	News
	IndusInd Bank	The bank has received a letter on December 23 from the Serious Fraud Investigation Office (SFIO) regarding an investigation into the affairs of IndusInd Bank, seeking relevant information. The bank continues to extend full cooperation and support to law enforcement agencies.
	Lenskart	The Board of Lenskart Solutions Pte (Singapore), the wholly owned subsidiary of Lenskart Solutions, has approved an investment of KRW 3 billion (approximately Rs 18.6 crore) for the acquisition of a 29.24% stake in Korea-based startup iiNeer Corp. iiNeer develops technology-enabled eye-testing and lens-cutting equipment.
	KNR Constructions	<p>The company has executed Share Purchase Agreements (SPAs) with Indus Infra Trust for the sale of its 100% shareholding (including sub-debt) in four special purpose vehicles (SPVs) — KNR Palani Infra, KNR Ramagiri Infra, KNR Guruvayur Infra, and KNR Ramanattukara Infra.</p> <p>The company is expected to invest Rs 566.83 crore (in the form of equity and sub-debt) in the SPVs, against which it is expected to receive Rs 1,543.19 crore. This includes Rs 1,398.65 crore towards sale consideration and Rs 144.54 crore as estimated cash surplus, which will be upstreamed to the company in an agreed manner through this transaction</p>

Stock	News
Reliance Inds	Reliance Industries has restarted buying discounted Russian crude oil. The company is sourcing barrels from suppliers not under sanctions. These shipments are heading to its refinery in Gujarat. This move is expected to limit a drop in India's overall Russian oil imports this month. Reliance had paused purchases after US sanctions were imposed on Russian producers.
Coforge	Coforge Limited announced the launch of EvolveOps.AI, a next-generation Agentic AI powered IT operations management platform. It is designed to empower enterprises to prepare for an AI-first era, leveraging purposebuilt hybrid cloud architecture & agentic operations for agility, resilience and transformation. Powered by advanced Agentic AI agents, EvolveOps.AI delivers end-to-end autonomous operations across the lifecycle of enterprise systems running on a hybrid cloud ecosystem.
Oriental Rail Infra	Oriental Rail Infrastructure Limited has secured order worth Rs. 4.90 crore from Integral Coach Factory (ICF), Chennai, Indian Railways.
HEG	Bhilwara Energy Limited would acquire 100% Stake in 76 MW Phata Byung Hydroelectric Project in Uttarakhand. After this the total hydro capacity to rise to 375 MW.
Vikran Engg.	Company received an award of contract from NTPC Renewable Energy Ltd. of Rs 459.20 crores for EPC of 400 MW AC solar project on balance of system basis at Chitrakoot-1 in Uttar Pradesh. It is expected to be completed in the next 12 months.
Innovators Façade Systems	Company has received the Letter of Award for Design, Supply and Installation of Façade and allied works including BMU works as NSC basis from Avante Spaces. The order is valued at Rs 57.63 crore.
Strides Pharma	Company said that a routine current Good Manufacturing Practices (cGMP) inspection was conducted by the US FDA at the Formulations Facility of Strides Pharma Inc. USA (SPI), a step-down wholly owned subsidiary of the Company, at Chestnut Ridge, New York, USA during the period December 17, 2025 to December 23, 2025. At the conclusion of the inspection, the US FDA has issued a Form 483 with four observations. These observations are procedural in nature and the company does not anticipate any impact on supply of its commercial products.

Stock	News
SJVN	<p>A wholly owned subsidiary of the Company i.e., SJVN Green Energy Limited (SGEL), has achieved the Commercial Operation Date (CoD) of 1,000 MW Bikaner Solar Power Project, marking the significant milestone in the Company's journey towards strengthening the nation's power generation capacity. The 1,000 MW Bikaner Solar Power Project is at Bikaner district of Rajasthan. The maximum usage charges have been fixed at Rs 2.57 per unit, thereby contributing to the availability of affordable green power to consumers. The project has been developed on 5,000 acres of outright-purchased land near Village Banderwala in Bikaner District, Rajasthan, one of the highest solar-yield regions in the country. The commissioning of this project contributes significantly towards achievement of the Government of India's target of 500 GW of renewable energy capacity by 2030. The project is developed at the cost of Rs 5,492 crore and has been executed under the Domestic Content Requirement (DCR) mode, utilizing domestically manufactured solar photovoltaic cells and modules, thereby supporting the Make in India initiative.</p>
Dilip Buildcon	<p>Dilip Buildcon through its DBL-SRBG (JV) has received Completion Certificate of the project Construction of extra-dosed Bridge across Sharavathi Backwaters and approaches between Ambargodu and Kalasavalli of NH - 369E in the state of Karnataka (Job No. NH-369E-KNT-201819-895) on EPC Basis.</p>
NTPC	<p>The company has commissioned the second and final part of 13 MW out of the 23 MW capacity of the Solapur Solar PV project at NTPC Solapur, Maharashtra.</p> <p>With this, the total installed and commercial capacity of NTPC on a standalone and group basis now stands at 60,796 MW and 85,623 MW, respectively.</p>
Ola Electric	<p>The company has received incentives amounting to Rs 366.78 crore under the Production Linked Incentive Scheme for Automobile and Auto Components (PLI-Auto Scheme) for claims pertaining to FY25.</p>
SEAMEC	<p>Its vessel, SEAMEC III, has sailed for the commencement of the second part of the Pipeline Replacement Project – Group A (PRP-VIII A) and the DSF II project with effect from December 25.</p>

Stock	News
Panacea Biotec	The company has received an amendment to the Letter of Award from UNICEF for the supply of its WHO pre-qualified fully liquid pentavalent vaccine, Easyfive-TT, during calendar years 2023–2027. The original Letter of Award from UNICEF was received on October 10, 2022.
Castrol India	Motion JVCo, together with Stonepeak Motion Holdco, Stonepeak Infrastructure Fund V Cayman (AIV I) LP, Stonepeak Infrastructure Fund V (Lux) (AIV I) SCSp, and CPP Investment Board Private Holdings (6) Inc, has announced an open offer to acquire a 26% stake in Castrol India. The acquirers will purchase up to 25.71 crore equity shares (26% stake) in Castrol India at Rs 194.04 per share.
Ultratech Cement	<p>The company announced the commissioning of additional cement capacity at its Maharashtra and Rajasthan units, leading to an increase in production capacity of 1.8 mtpa.</p> <p>As a result, its total domestic grey cement manufacturing capacity stands at 188.66 mtpa. Along with its overseas capacity of 5.4 mtpa, the company's global capacity stands at 194.06 mtpa.</p>
Supreme Industries	The company has received a Letter of Acceptance (LoA) from Bharat Petroleum Corporation (BPCL) for a repeat order to supply approximately 2 lakh units of 10.0 kg composite LPG cylinders. The total supply is expected to be valued at around Rs 54 crore.
JK Cement	The company has been declared the 'preferred bidder' for the mining lease of the Kishanpura Limestone Block in Nagaur, Rajasthan. The limestone block spans an area of 483 hectares and has G3-level exploration.
NBCC	The company has signed a Memorandum of Understanding (MoU) with the Board of Mumbai Port Authority for the development of the CGO Complex on 25 acres of Mumbai Port land as deposit work on a turnkey basis. NBCC will serve as the project management consultant for the said works.

Key Events

U.S. Jobless Claims Dip More Than Expected To 214,000

The Labor Department released a report on Wednesday showing first-time claims for U.S. unemployment benefits fell by more than expected in the week ended December 20th.

The report said initial jobless claims dipped to 214,000, a decrease of 10,000 from the previous week's unrevised level of 224,000. Economists had expected jobless claims to edge down to 223,000.

"Despite ongoing seasonal volatility, initial jobless claims remain in a range consistent with relatively steady labor market conditions and don't change out outlook for the labor market or Fed policy," said Nancy Vanden Houten, Lead U.S. Economist at Oxford Economics.

Japan Leading Index Rises Less Than Estimated

Japan's leading index improved less than initially estimated in October to the highest level in sixteen months, the latest data from the Cabinet Office showed Wednesday. The leading index, which measures future economic activity, rose to 109.8 in October from 108.2 in September. The flash score was 110.0. Moreover, a similar score was last seen in June 2024.

Tokyo CPI inflation eases in Dec but stays above BOJ target

okyo's core consumer price index (CPI), a closely watched gauge of underlying inflation in Japan's capital, showed a moderation in price pressures in December but remained above the Bank of Japan's long-standing target. Tokyo core CPI, which excludes volatile fresh food prices, grew 2.3% year-on-year in November, government data showed on Friday. The print was slightly below expectations of 2.5% and eased from 2.8% in the prior month.

China widens foreign investment incentive list to stem falling inflows

China on Wednesday listed more sectors eligible for foreign investment incentives, from tax breaks to preferential land use, in its latest effort to stem a prolonged decline in overseas capital inflows.

Under the 2025 edition of the catalogue of industries for encouraging foreign investment, China added more than 200 and revised about 300, with a focus on advanced manufacturing, modern services and green and high-tech sectors, the list jointly issued by the National Development and Reform Commission and the commerce ministry showed.

Chart with Interesting Observations

Global Trade: Uneven Growth, Rising Volatility, and Supply-Chain Rewiring

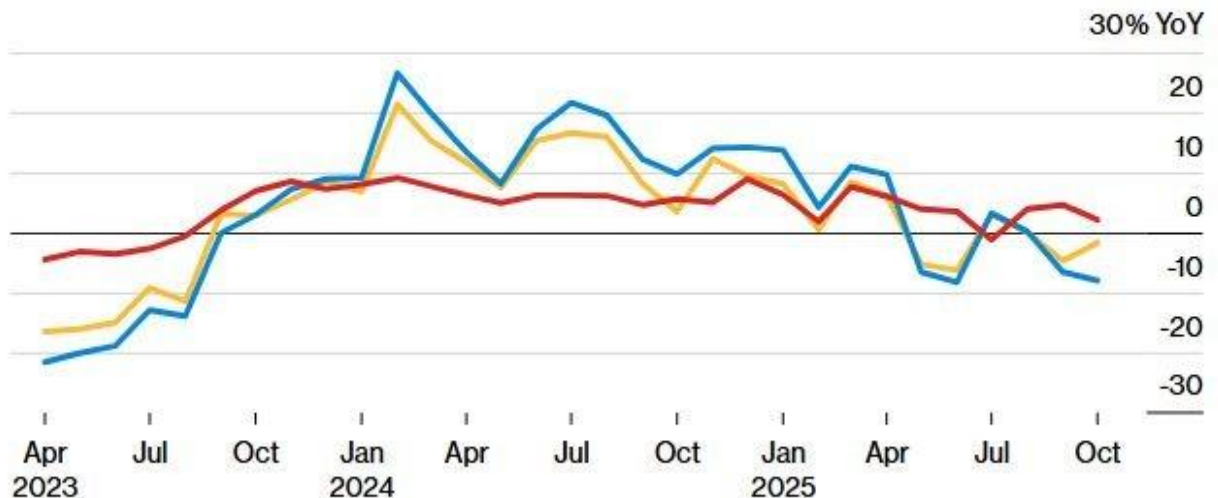
- **Global trade outlook (2026):** Trade growth likely remains positive year-on-year (~55% probability), but uneven across regions and sectors. Risks stem from re-routing, capacity mismatches, and policy uncertainty rather than a broad collapse.
- **Trade diversion:** US inbound trade weakened in 2025, while imports into India, Latin America, the Middle East, and parts of Africa expanded. Supply chains are increasingly bypassing the US, supporting non-US import hubs and domestic-demand equities outside the US.
- **Shipping risk:** High chance (>60%) that shipping capacity normalises faster than demand, pressuring freight rates and raising congestion risks in Europe. Volatility likely, with integrated operators favoured over spot-exposed players.
- **Policy event risks:** USMCA review is unlikely to trigger withdrawal but may cause short-term FX volatility in MXN and CAD.

US Merchandise Imports

US Merchandise Imports Lag Behind Global Volume Growth

Global container volumes outside the US remain resilient

Worldwide US inbound US total



Source: John McCown/Container Trade Statistics

NIFTY : Minor Profit Booking Seen at Highs; Bullish Structure and Uptrend Intact



NIFTY AUTO INDEX: Momentum Oscillators Flash Bullish as Uptrend Holds—Buy on Dips



F&O Highlights

LONG UNWINDING WAS SEEN IN THE NIFTY & BANK NIFTY FUTURES

Create longs with the SL of 26000 levels.

- In a day before yesterday session after a flat start, buying lifted Nifty to an intraday high of 26,235 in the first hour. However, momentum shifted after 10:30 AM as correction set in, pulling the index down more than 100 points from its intraday highs. The Nifty finally ended the session with a loss of 35 point to close at 26,142. .
- Long Unwinding was seen in the Nifty Futures where Open Interest fell by 1.49% with Nifty falling by 0.13%.
- Long Unwinding was seen in the Bank Nifty Futures where Open Interest fell by 4.62% with Bank Nifty falling by 0.20%.
- Nifty Open Interest Put Call ratio fell to 0.98 levels from 1.14 levels.
- Amongst the Nifty options (30-Dec Expiry), Call writing is seen at 26300-26400 levels, indicating Nifty is likely to find strong resistance in the vicinity of 26300-26400 levels. On the lower side, an immediate support is placed in the vicinity of 26000-26100 levels where we have seen Put writing.
- Short covering was seen by FII's' in the Index Futures segment where they net bought worth 1,032 cr with their Open Interest going down by 7847 contracts.

Index	Expected Trend	Prev. Close	Buy/Sell	Stop Loss	Target
NIFTY FUT	UP	26173.10	BUY AROUND 26100	26000	26250
BANK NIFTY FUT	UP	59253.00	BUY AROUND 59150	58950	59500

Nifty 50 Snapshot			
	24-Dec-25	23-Dec-25	% Chg.
Nifty Spot	26142.10	26177.15	-0.13
Nifty Futures	26173.10	26206.90	-0.13
Premium/ (Discount)	31.00	29.75	N.A.
Open Interest (OI)	1.65	1.68	-1.49
Nifty PCR	0.98	1.14	-13.34

Bank Nifty Snapshot			
	24-Dec-25	23-Dec-25	% Chg.
Bank Nifty Spot	59183.60	59299.55	-0.20
Bank Nifty Futures	59253.00	59407.60	-0.26
Premium/ (Discount)	69.40	108.05	N.A.
Open Interest (OI)	0.18	0.19	-4.62
Bank Nifty PCR	0.77	0.85	-8.98

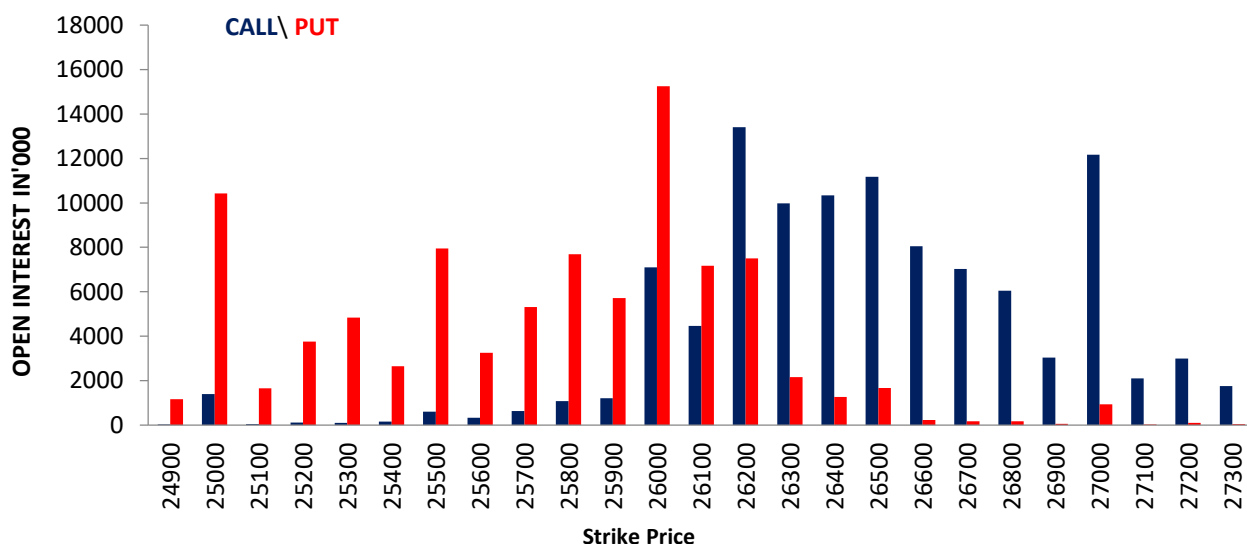
Nifty Options Highest OI (Weekly)			
CALL		PUT	
Strike Price	Open Interest (Contracts)	Strike Price	Open Interest (Contracts)
26200	178846	26000	203403

FII Activity on 24 Dec 2025

	BUY		SELL		NET	OPEN INTEREST	
	Contracts	Value (Rs Cr)	Contracts	Value (Rs Cr)	(Rs Cr)	Contracts	Value (Rs Cr)
Index Futures	18763	3633	14056	2601	1032	171773	33026
Nifty Futures	12884	2477	8922	1639	839	135885	26002
Bank Nifty Fut.	3183	647	2720	552	95	19510	3956
Index Options	4194297	821910	4199423	823517	-1607	2107604	405565
Nifty Options	3575926	696121	3575873	696631	-511	1657433	315785
Bank Nifty Opt.	463466	96063	467491	96912	-849	390681	78545
Stock Futures	1907628	129750	1897234	128871	879	6060057	413677
Stock Options	723471	51244	706785	50337	907	582622	40439

FII's Open Interest (Contracts)

Date	Index Futures	Nifty Futures	Bank Nifty Futures	Index Options	Nifty Options	Bank Nifty Options	Stock Futures	Stock Options
24-Dec-25	171773	135885	19510	2107604	1657433	390681	6060057	582622
23-Dec-25	179620	141597	21827	1775847	1323427	402595	6059775	613680
NET (CONTRACTS)	-7847	-5712	-2317	331757	334006	-11914	282	-31058

Nifty Monthly (30 – Dec) Option Open Interest Distribution


Top Gainers OI Wise		
Company	Future OI (%)	Price (%)
LUPIN	13.82	-0.31
MUTHOOTFIN	9.00	-0.09
NUVAMA	8.33	4.57
SUPREMEIND	7.51	-0.91
OFSS	6.96	-0.45

Top Losers OI Wise		
Company	Future OI (%)	Price (%)
TITAGARH	-15.76	2.10
CYIENT	-15.60	-2.02
IRCTC	-13.54	-0.18
CANBK	-11.79	-0.37
AMBER	-11.39	0.08

Top Gainers Price Wise		
Company	Future OI (%)	Price (%)
MANAPPURAM	0.26	6.70
IIFL	1.91	5.13
NUVAMA	8.33	4.57
PNBHousing	-3.82	3.59
BDL	-0.58	3.48

Top Losers Price Wise		
Company	Future OI (%)	Price (%)
HFCL	-6.95	-3.05
BSE	0.58	-2.43
COFORGE	4.49	-2.39
PERSISTENT	0.49	-2.10
IEX	-6.34	-2.05

Long Buildup		
Company	Future OI (%)	Price (%)
NUVAMA	8.33	4.57
HINDZINC	5.12	2.47
SBICARD	3.68	0.07
PRESTIGE	2.95	0.82
ABCAPITAL	2.24	0.17

Short Buildup		
Company	Future OI (%)	Price (%)
LUPIN	13.82	-0.31
MUTHOOTFIN	9.00	-0.09
SUPREMEIND	7.51	-0.91
OFSS	6.96	-0.45
UNIONBANK	6.88	-1.05

Long Unwinding		
Company	Future OI (%)	Price (%)
CYIENT	-15.60	-2.02
IRCTC	-13.54	-0.18
CANBK	-11.79	-0.37
IREDA	-9.41	-0.45
KAYNES	-9.05	-0.53

Short Covering		
Company	Future OI (%)	Price (%)
TITAGARH	-15.76	2.10
AMBER	-11.39	0.08
VOLTAS	-10.76	0.66
RVNL	-10.74	1.13
BAJAJ-AUTO	-10.35	0.78

Securities In Ban For Trade – 26.12.2025

No.	Company Name
1.	SAMMAANCAP

Economic Calendar

Friday	Monday	Tuesday	Wednesday	Thursday
26 Dec	29 Dec	30 Dec	31 Dec	01 Jan
UK, France Germany: Holiday Japan: Tokyo CPI, Retail Sales, IIP	US: Pending Home Sales, Dallas Fed Mfg. Activity	US: FHFA HPI, MNI Chicago PMI,	Japan: Holiday China : Official PMI US: , MBA Mortgage, Initial & Conti. Claims India: Fiscal Deficit	US: FOMC Meeting Minutes

Open Derivatives Trading Calls

NO	RECO DT	RECO	COMPANY NAME	BUY RANGE	CMP	SL	TARGET	UPSIDE %	VALID TILL
1	24-DEC-25	BUY	BANK NIFTY DEC FUT	59525-59311	59,221.00	59211	59950	1.2	29-DEC-25
2	17-DEC-25	SELL	ICICI BANK FEB FUT	1366.2-1385	1,376.30	1400	1265	8.1	24-FEB-26
3	19-DEC-25	BUY	LARSEN & TOUBRO JAN FUT	4111.90-4010	4,082.60	3960	4300	5.3	2-JAN-26
4	19-DEC-25	BUY	MOTHERSON JAN FUT	121.56-118.50	120.40	117	127	5.5	2-JAN-26
5	24-DEC-25	BUY	PERONET JAN FUT	285.55-277.45	283.75	275	310	9.3	7-JAN-26

Open Short-Term MTF Calls

NO.	RECO DT.	RECO	COMPANY NAME	BUY RANGE	CMP	Lower Band	SL	TARGET	UPSIDE %	VALID TILL
1	11-DEC-25	BUY	ABB	5234-5250	5215	5125	5050	5500	5.5	31-DEC-25
2	15-DEC-25	BUY	PNC INFRA	255.70-257	253.28	247	243	272	7.4	31-DEC-25
3	18-DEC-25	BUY	ONE MOBIKWIK SYSTEMS	237-235	233.97	228	223	252	7.7	1-JAN-26
4	19-DEC-25	BUY	SHALBY	200-199	201.29	194	190	213	5.8	2-JAN-26
5	22-DEC-25	BUY	FSL	354-358	350.4	345	337	375	7.0	5-JAN-26
6	23-DEC-25	BUY	SAIL	132.25-133	131.85	130	128	138	4.7	13-JAN-26
7	23-DEC-25	BUY	IREDA	138.45-139.20	138.1	135.5	133	145	5.0	13-JAN-26

Open Positional MTF Calls

NO.	RECO DT.	RECO	COMPANY NAME	BUY RANGE	CMP	SL	TARGET 1	TARGET 2	UPSIDE %	VALID TILL
1	15-DEC-25	BUY	IDFC FIRST BANK	83.50-83.09	84.24	78.5	88.5	95	13	29-JAN-26
2	19-DEC-25	BUY	BOROSIL RENEWABLES	532-528	544.35	495.0	570.0	610	12	17-FEB-26
3	19-DEC-25	BUY	BHARAT FORGE	1427-1435	1450.5	1350.0	1515.0	1550	7	2-FEB-26
4	20-DEC-25	BUY	TEGA INDUSTRIES	1956-1990	1970.6	1810.0	2115.0	2190	11	18-FEB-26
5	22-DEC-25	BUY	UNIPARTS INDIA	497-493.35	487.25	465.0	533.0	565	16	20-FEB-26
6	22-DEC-25	BUY	GLENMARK	2040-2060	2020.1	1895.0	2210.0	2265	12	5-FEB-26
7	24-DEC-25	BUY	KFINTECH	1118-1112.60	1091.3	1058.0	1180.0	1240	14	7-FEB-26

= 1st Target Achieved

NSE 200 SUPPORT & RESISTANCE

SYMBOL	CLOSE	PIVOT	SUPT 2	SUPT 1	RESI 1	RESI 2	52 W H	52 W L	30 D % CHG
360ONE	1196.0	1197.8	1161.1	1178.5	1215.2	1234.5	1318.0	790.5	4.94
ABB	5215.0	5227.7	5163.7	5189.3	5253.3	5291.7	7016.0	4684.5	2.42
ABCAPITAL	347.4	349.7	340.6	344.0	353.1	358.8	369.0	149.0	6.68
ACC	1739.4	1744.8	1719.7	1729.6	1754.7	1769.9	2119.9	1735.0	-4.96
ADANIENSOL	996.6	997.9	981.0	988.8	1005.7	1014.8	1050.0	639.5	2.23
ADANIENT	2222.7	2233.0	2191.6	2207.1	2248.5	2274.4	2616.5	1967.5	-8.24
ADANIGREEN	1015.0	1017.2	1005.1	1010.0	1022.1	1029.3	1177.6	758.0	-1.50
ADANIPORTS	1494.3	1497.8	1482.6	1488.5	1503.7	1513.0	1549.0	1010.8	0.98
ADANIPOWER	143.2	143.5	141.5	142.3	144.4	145.5	182.7	89.0	-4.00
ALKEM	5566.0	5564.3	5505.3	5535.7	5594.7	5623.3	5868.0	4491.7	-2.35
AMBUJACEM	548.1	549.7	543.9	546.0	551.8	555.5	625.0	455.0	0.10
APLAPOLLO	1858.6	1861.4	1837.7	1848.1	1871.8	1885.1	1936.0	1272.7	7.57
APOLLOHOSP	7172.0	7142.0	6977.0	7074.5	7239.5	7307.0	8099.5	6001.0	-2.96
ASHOKLEY	175.3	176.1	172.6	173.9	177.5	179.7	178.3	95.9	21.16
ASIANPAINT	2785.5	2797.4	2754.7	2770.1	2812.8	2840.1	2985.7	2124.8	-3.17
ASTRAL	1396.6	1403.9	1373.1	1384.9	1415.7	1434.7	1748.0	1232.3	-3.86
ATGL	565.2	565.2	556.8	561.0	569.4	573.5	798.0	532.6	-7.04
AUBANK	974.1	978.1	962.9	968.5	983.7	993.4	1007.3	478.4	6.41
AUROPHARMA	1211.4	1215.6	1197.6	1204.5	1222.5	1233.6	1356.2	1010.0	0.46
AXISBANK	1226.3	1228.8	1218.1	1222.2	1232.9	1239.5	1304.0	933.5	-3.88
BAJAJ-AUTO	9170.0	9144.8	9020.3	9095.2	9219.7	9269.3	9490.0	7089.4	3.13
BAJAJFINSV	2035.7	2041.5	2001.3	2018.5	2058.7	2081.7	2195.0	1551.7	-0.81
BAJAJHFL	95.2	95.4	94.4	94.8	95.8	96.4	137.0	92.1	-9.83
BAJAJHLDNG	11224.0	11241.3	11137.3	11180.7	11284.7	11345.3	14763.0	10245.1	-3.58
BAJFINANCE	1011.7	1018.4	987.0	999.3	1030.7	1049.8	1102.5	679.2	0.76
BANKBARODA	290.6	291.4	287.5	289.0	292.9	295.3	304.0	190.7	2.25
BANKINDIA	139.8	140.3	138.0	138.9	141.2	142.5	151.4	90.1	-3.90
BDL	1481.2	1468.6	1397.3	1439.3	1510.6	1539.9	2096.6	907.0	-2.08
BEL	400.0	400.4	394.4	397.2	403.2	406.5	436.0	240.3	-3.93
BHARATFORG	1450.5	1456.0	1432.4	1441.5	1465.1	1479.6	1470.6	919.1	2.86
BHARTIARTL	2123.7	2124.0	2097.8	2110.7	2136.9	2150.2	2174.5	1559.5	-1.80
BHARTIHEXA	1816.5	1814.5	1775.6	1796.0	1834.9	1853.4	2052.9	1234.0	3.25
BHEL	278.2	280.5	272.7	275.5	283.2	288.2	295.3	176.0	-1.52
BIOCON	398.4	400.7	391.7	395.0	404.0	409.7	425.0	291.0	0.38
BLUESTARCO	1777.4	1775.1	1737.3	1757.3	1795.1	1812.9	2417.0	1521.0	0.06
BOSCHLTD	36195.0	36225.0	35765.0	35980.0	36440.0	36685.0	41945.0	25921.6	-0.84
BPCL	365.9	367.4	360.7	363.3	370.0	374.0	381.6	234.0	0.37
BRITANNIA	6030.0	6037.3	5963.3	5996.7	6070.7	6111.3	6336.0	4506.0	3.73
BSE	2670.9	2695.0	2611.2	2641.1	2724.9	2778.8	3030.0	1227.3	-6.56
CANBK	149.7	150.1	148.4	149.0	150.8	151.8	154.2	78.6	2.68
CGPOWER	660.9	662.4	650.3	655.6	667.7	674.5	797.6	517.7	-6.94
CHOLAFIN	1697.8	1691.8	1653.1	1675.4	1714.1	1730.5	1782.0	1168.0	2.30
CIPLA	1496.3	1498.2	1480.4	1488.3	1506.1	1516.0	1673.0	1335.0	-1.03
COALINDIA	402.4	405.5	394.9	398.6	409.3	416.2	417.3	349.3	6.39
COCHINSHIP	1649.3	1653.8	1611.8	1630.5	1672.5	1695.8	2545.0	1180.2	-2.83
COFORGE	1737.7	1750.3	1701.4	1719.5	1768.4	1799.2	2005.4	1194.0	-3.33
COLPAL	2093.3	2097.8	2073.9	2083.6	2107.5	2121.7	2975.0	2064.0	-4.00
CONCOR	508.6	510.2	501.7	505.1	513.7	518.8	652.0	481.0	-0.51
COROMANDEL	2400.0	2407.0	2368.3	2384.2	2422.9	2445.7	2718.9	1596.0	6.06
CUMMINSIND	4417.4	4448.6	4302.5	4359.9	4506.0	4594.7	4615.0	2580.0	1.93

NSE 200 SUPPORT & RESISTANCE

SYMBOL	CLOSE	PIVOT	SUPT 2	SUPT 1	RESI 1	RESI 2	52 W H	52 W L	30 D % CHG
DABUR	490.6	491.6	485.6	488.1	494.1	497.6	577.0	433.3	-4.87
DIVISLAB	6496.5	6520.8	6426.8	6461.7	6555.7	6614.8	7071.5	4955.0	1.94
DIXON	12629.0	12797.7	12201.7	12415.3	13011.3	13393.7	18700.0	12130.0	-15.61
DLF	694.9	697.1	685.5	690.2	701.8	708.7	886.8	601.2	-4.20
DMART	3800.2	3804.8	3733.1	3766.7	3838.4	3876.5	4949.5	3340.0	-5.89
DRREDDY	1265.8	1267.8	1235.1	1250.4	1283.1	1300.5	1405.9	1020.0	1.76
EICHERMOT	7312.5	7300.8	7191.8	7252.2	7361.2	7409.8	7349.5	4646.0	2.49
ENRIN	2595.5	2595.8	2565.6	2580.5	2610.7	2626.0	3625.0	2508.8	-22.12
ETERNAL	284.9	284.7	281.8	283.3	286.2	287.6	368.5	194.8	-5.66
EXIDEIND	367.2	368.5	361.1	364.1	371.6	376.0	431.6	328.0	-2.18
FEDERALBNK	261.8	263.4	257.4	259.6	265.6	269.5	271.1	172.7	6.81
FORTIS	902.7	903.8	892.3	897.5	909.0	915.2	1104.3	577.0	-1.99
GAIL	171.0	171.9	168.8	169.9	173.0	174.9	202.8	150.5	-6.55
GLENMARK	2020.1	2029.6	1988.5	2004.3	2045.4	2070.7	2284.8	1275.5	9.54
GMRAIRPORT	103.1	103.9	101.2	102.1	104.9	106.6	110.4	67.8	-0.93
GODFRYPHLP	2810.8	2825.9	2768.9	2789.9	2846.9	2882.9	3947.0	1370.8	-2.68
GODREJCP	1192.2	1194.4	1179.5	1185.8	1200.7	1209.3	1309.0	979.5	5.95
GODREJPROP	2006.1	2017.6	1974.5	1990.3	2033.4	2060.7	2900.0	1900.0	-4.06
GRASIM	2826.9	2836.6	2793.7	2810.3	2853.2	2879.5	2977.8	2277.0	3.37
HAL	4421.3	4426.2	4363.6	4392.5	4455.1	4488.8	5165.0	3046.1	-3.78
HAVELLS	1424.4	1427.0	1410.7	1417.5	1433.8	1443.3	1721.2	1380.0	-1.16
HCLTECH	1674.7	1673.3	1658.4	1666.5	1681.4	1688.2	2012.2	1302.8	4.15
HDFCAMC	2656.1	2673.8	2591.0	2623.5	2706.3	2756.6	2967.3	1781.5	-50.75
HDFCBANK	997.2	996.5	990.1	993.7	1000.1	1002.9	1020.5	812.2	-0.09
HDFCLIFE	755.4	759.3	746.0	750.7	764.0	772.6	820.8	584.3	-1.13
HEROMOTOCO	5698.5	5712.8	5652.8	5675.7	5735.7	5772.8	6388.5	3344.0	-5.06
HINDALCO	864.5	869.6	849.5	857.0	877.1	889.8	882.3	546.5	11.15
HINDPETRO	470.7	472.5	464.2	467.5	475.7	480.7	494.5	287.6	-0.25
HINDUNILVR	2282.2	2288.4	2261.5	2271.9	2298.8	2315.3	2750.0	2136.0	-6.23
HINDZINC	624.9	624.9	611.0	617.9	631.9	638.9	631.9	378.2	36.34
HUDCO	216.2	217.3	213.2	214.7	218.8	221.4	254.3	158.9	-6.00
HYUNDAI	2307.9	2311.2	2294.8	2301.3	2317.7	2327.6	2890.0	1541.7	-1.20
ICICIBANK	1359.8	1361.9	1351.3	1355.5	1366.1	1372.5	1500.0	1186.0	-0.71
ICICIGI	1959.3	1959.4	1944.6	1952.0	1966.8	1974.2	2068.7	1613.7	-2.24
IDEA	12.0	12.1	11.8	11.9	12.2	12.4	12.2	6.1	20.56
IDFCFIRSTB	84.2	84.5	83.3	83.8	85.0	85.8	86.0	52.5	7.55
IGL	193.7	194.6	191.1	192.4	195.9	198.1	229.0	172.0	-3.81
INDHOTEL	740.1	738.5	731.9	736.0	742.6	745.1	894.9	672.6	0.94
INDIANB	777.2	777.9	767.9	772.6	782.6	787.9	894.9	473.9	-8.76
INDIGO	5081.5	5099.0	4978.5	5030.0	5150.5	5219.5	6232.5	3945.0	-13.04
INDUSINDBK	848.1	850.4	835.7	841.9	856.5	865.0	1086.6	606.0	0.18
INDUSTOWER	423.9	421.5	405.0	414.4	430.9	438.0	430.0	312.6	6.78
INFY	1663.4	1661.2	1646.1	1654.7	1669.8	1676.3	1982.8	1307.0	7.66
IOC	161.2	161.9	159.5	160.3	162.7	164.3	174.5	110.7	-3.69
IRB	42.5	42.6	41.8	42.1	43.0	43.4	61.0	40.5	-2.72
IRCTC	679.7	681.0	674.7	677.2	683.5	687.3	831.8	656.0	-1.56
IREDA	138.1	138.5	136.1	137.1	139.5	140.9	234.3	129.1	-4.37
IRFC	121.5	122.0	118.7	120.1	123.4	125.3	158.0	108.0	2.02
ITC	406.6	407.3	403.4	405.0	408.9	411.1	491.0	390.2	-0.31
ITCHOTELS	195.4	195.0	192.4	193.9	196.5	197.7	261.6	155.1	-6.38

NSE 200 SUPPORT & RESISTANCE

SYMBOL	CLOSE	PIVOT	SUPT 2	SUPT 1	RESI 1	RESI 2	52 W H	52 W L	30 D % CHG
JINDALSTEL	999.0	1003.6	985.8	992.4	1010.2	1021.4	1098.0	723.4	-3.81
JIOFIN	298.9	299.9	295.3	297.1	301.7	304.4	338.6	198.7	-1.53
JSWENERGY	484.4	484.7	478.1	481.2	487.8	491.2	674.0	418.8	-0.04
JSWSTEEL	1091.3	1094.2	1079.0	1085.2	1100.4	1109.4	1223.9	880.0	-4.30
JUBLFOOD	563.7	564.0	556.3	560.0	567.7	571.7	796.8	548.4	-4.31
KALYANKJIL	487.2	487.9	480.5	483.8	491.2	495.3	795.4	399.4	-1.86
KEI	4408.8	4410.3	4362.3	4385.5	4433.5	4458.3	4572.7	2424.0	8.05
KOTAKBANK	2163.7	2167.7	2150.6	2157.1	2174.2	2184.8	2301.9	1723.8	3.64
KPITTECH	1217.3	1222.4	1199.2	1208.2	1231.4	1245.6	1500.0	1020.6	4.14
LICHSGFIN	539.5	538.3	530.3	534.9	542.9	546.3	646.5	483.7	-1.18
LICI	853.9	854.5	848.0	850.9	857.4	861.0	980.0	715.3	-5.37
LODHA	1080.1	1082.0	1066.2	1073.2	1089.0	1097.8	1531.0	1035.2	-8.22
LT	4053.6	4060.8	4028.2	4040.9	4073.5	4093.4	4140.0	2965.3	0.71
LTF	303.3	305.3	297.0	300.1	308.4	313.6	315.4	129.2	5.04
LTIM	6163.0	6180.3	6071.3	6117.2	6226.2	6289.3	6380.0	3802.0	4.00
LUPIN	2107.0	2106.1	2087.3	2097.1	2115.9	2124.9	2402.9	1795.2	3.82
M&M	3636.7	3635.6	3589.7	3613.2	3659.1	3681.5	3795.0	2425.0	-3.01
M&MFIN	389.7	391.0	376.4	383.0	397.6	405.5	412.2	231.0	-82.64
MANKIND	2193.3	2209.2	2149.0	2171.2	2231.4	2269.4	2998.4	2090.0	-2.18
MARICO	734.8	735.4	726.2	730.5	739.7	744.6	765.3	577.9	-0.70
MARUTI	16703.0	16655.0	16477.0	16590.0	16768.0	16833.0	16720.0	10725.0	4.54
MAXHEALTH	1081.4	1080.5	1060.7	1071.1	1090.9	1100.3	1314.3	940.1	-8.44
MAZDOCK	2540.3	2538.1	2486.1	2513.2	2565.2	2590.1	3775.0	1918.1	-7.46
MFSL	1678.5	1687.6	1651.1	1664.8	1701.3	1724.1	1751.4	950.0	1.02
MOTHERSON	119.5	119.9	118.3	118.9	120.5	121.5	122.8	71.5	8.86
MOTILALOF	893.6	888.9	870.0	881.8	900.7	907.8	1097.1	513.0	-5.72
MPHASIS	2891.9	2907.1	2846.4	2869.1	2929.8	2967.8	3078.4	2044.6	5.27
MRF	151435	152115	149255	150345	153205	154975	163600	102124	-0.66
MUTHOOTFIN	3804.7	3828.2	3728.2	3766.5	3866.5	3928.2	3890.0	1965.0	4.64
NATIONALUM	295.3	294.8	286.5	290.9	299.2	303.0	298.6	137.8	17.80
NAUKRI	1366.8	1372.6	1345.6	1356.2	1383.2	1399.6	1825.8	1157.0	1.97
NESTLEIND	1259.7	1257.2	1241.0	1250.4	1266.6	1273.4	1311.6	1055.0	-1.64
NHPC	77.8	78.0	77.0	77.4	78.5	79.1	92.3	71.0	-1.28
NMDC	81.4	81.7	80.2	80.8	82.3	83.1	82.5	59.5	10.77
NTPC	322.6	323.8	319.4	321.0	325.4	328.2	371.5	292.8	-1.26
NTPCGREEN	93.3	92.8	87.7	90.5	95.6	98.0	135.0	84.6	-3.97
NYKAA	258.0	258.9	253.9	255.9	260.9	263.9	273.2	154.9	-3.94
OBEROIRLT	1672.4	1674.5	1641.6	1657.0	1689.9	1707.4	2343.7	1452.0	1.03
OFSS	7782.0	7799.0	7712.0	7747.0	7834.0	7886.0	13220.0	7038.0	-4.74
OIL	408.9	410.1	404.6	406.8	412.3	415.6	494.6	325.0	-3.80
ONGC	233.8	234.5	231.1	232.4	235.8	237.9	273.5	205.0	-5.34
PAGEIND	36605.0	36588.3	36258.3	36431.7	36761.7	36918.3	50590.0	35310.0	-5.86
PATANJALI	547.2	547.5	533.5	540.3	554.4	561.6	670.3	521.0	-5.54
PAYTM	1324.7	1332.6	1304.1	1314.4	1342.9	1361.1	1381.8	651.5	4.65
PERSISTENT	6352.5	6392.7	6244.2	6298.3	6446.8	6541.2	6768.8	4149.0	0.89
PFC	352.3	353.5	347.5	349.9	355.9	359.4	474.9	329.9	-4.71
PHOENIXLTD	1853.4	1850.9	1820.9	1837.2	1867.2	1880.9	1864.7	1402.5	9.15
PIDILITIND	1446.6	1451.7	1432.3	1439.4	1458.8	1471.1	1575.0	1311.1	-1.73
PIIND	3218.2	3228.5	3181.4	3199.8	3246.9	3275.6	4330.0	2951.1	-6.10
PNB	120.9	121.1	120.2	120.6	121.4	121.9	127.8	85.5	-1.18

NSE 200 SUPPORT & RESISTANCE

SYMBOL	CLOSE	PIVOT	SUPT 2	SUPT 1	RESI 1	RESI 2	52 W H	52 W L	30 D % CHG
POLICYBZR	1916.3	1920.8	1888.9	1902.6	1934.5	1952.7	2246.9	1311.4	5.83
POLYCAB	7630.5	7639.8	7572.8	7601.7	7668.7	7706.8	7903.0	4555.0	1.46
POWERGRID	268.1	268.1	264.4	266.2	270.0	271.9	322.0	247.3	-3.44
POWERINDIA	18420.0	18513.3	18043.3	18231.7	18701.7	18983.3	22840.0	8801.0	-14.58
PREMIERENE	886.7	892.2	861.3	874.0	904.9	923.2	1384.0	774.1	-10.37
PRESTIGE	1618.0	1613.3	1577.3	1597.6	1633.6	1649.3	1814.0	1048.1	-4.18
RECLTD	354.8	355.6	351.2	353.0	357.4	360.0	544.7	331.0	-0.96
RELIANCE	1558.2	1562.5	1540.4	1549.3	1571.4	1584.6	1581.3	1114.9	0.75
RVNL	345.7	344.4	333.0	339.3	350.7	355.8	501.8	301.2	10.10
SAIL	131.9	132.4	129.1	130.5	133.8	135.7	145.9	99.2	-1.66
SBICARD	867.6	871.3	855.7	861.6	877.3	887.0	1027.3	663.1	-1.19
SBILIFE	2025.4	2026.4	2013.0	2019.2	2032.6	2039.8	2086.6	1372.6	0.14
SBIN	969.0	971.3	961.5	965.2	975.0	981.1	999.0	680.0	-0.38
SHREECEM	26145.0	26061.7	25721.7	25933.3	26273.3	26401.7	32490.0	24817.8	-1.27
SHRIRAMFIN	973.7	971.8	946.1	959.9	985.6	997.5	983.7	493.4	18.27
SIEMENS	3098.0	3111.7	3054.7	3076.3	3133.3	3168.7	6819.8	2450.0	-2.38
SOLARINDS	12485.0	12548.7	12293.7	12389.3	12644.3	12803.7	17820.0	8482.5	-9.25
SONACOMS	484.0	485.5	479.0	481.5	488.0	492.1	607.3	380.0	-3.81
SRF	3098.2	3100.6	3063.5	3080.9	3118.0	3137.7	3325.0	2196.9	9.15
SUNPHARMA	1737.0	1738.3	1698.3	1717.7	1757.7	1778.3	1910.0	1548.0	-2.40
SUPREMEIND	3320.3	3332.5	3283.8	3302.1	3350.8	3381.2	4826.9	3095.0	-4.46
SUZLON	53.3	53.8	51.9	52.6	54.5	55.7	74.3	46.2	-3.27
SWIGGY	400.1	401.7	393.6	396.8	405.0	409.9	594.0	297.0	3.79
TATACOMM	1771.4	1780.6	1741.1	1756.3	1795.8	1820.1	2004.0	1291.0	-7.78
TATACONSUM	1179.2	1180.0	1161.9	1170.6	1188.7	1198.1	1202.8	893.1	-0.33
TATAELXSI	5387.5	5395.2	5323.2	5355.3	5427.3	5467.2	7015.0	4700.0	1.26
TATAPOWER	379.7	380.8	376.1	377.9	382.6	385.5	416.8	326.4	-1.89
TATASTEEL	170.1	170.5	168.5	169.3	171.3	172.4	186.9	122.6	1.23
TATATECH	657.6	659.6	650.3	654.0	663.3	668.9	922.9	597.0	-1.92
TCS	3319.0	3314.1	3283.1	3301.0	3332.0	3345.1	4323.0	2866.6	5.35
TECHM	1631.5	1627.8	1606.5	1619.0	1640.3	1649.1	1773.6	1209.4	11.63
TIINDIA	2595.7	2597.8	2560.1	2577.9	2615.6	2635.5	3693.6	2407.1	-10.01
TITAN	3909.3	3914.8	3879.8	3894.5	3929.5	3949.8	3961.9	2925.0	0.13
TMPV	359.2	360.9	354.5	356.9	363.2	367.2	810.0	337.7	-0.84
TORNTPHARM	3834.3	3825.1	3786.2	3810.3	3849.2	3864.0	3882.2	2886.5	4.01
TORNTPOWER	1280.8	1284.2	1268.0	1274.4	1290.6	1300.4	1640.0	1188.0	-0.82
TRENT	4289.6	4262.0	4131.8	4210.7	4340.9	4392.2	7493.1	3930.1	-1.59
TVSMOTOR	3665.2	3677.5	3612.5	3638.8	3703.8	3742.5	3734.9	2171.4	6.49
ULTRACEMCO	11764.0	11741.7	11622.7	11693.3	11812.3	11860.7	13097.0	10047.9	0.30
UNIONBANK	150.8	151.4	148.8	149.8	152.4	154.0	160.2	100.8	-0.09
UNITDSPR	1422.1	1427.4	1398.3	1410.2	1439.3	1456.5	1700.0	1271.1	-0.35
UPL	772.7	776.6	763.6	768.1	781.1	789.6	786.3	493.0	2.91
VBL	477.7	477.4	467.9	472.8	482.3	486.9	663.6	419.6	6.70
VEDL	598.2	595.1	582.5	590.3	602.9	607.7	599.8	363.0	20.50
VMM	136.8	136.8	135.2	136.0	137.6	138.4	157.6	96.0	4.48
VOLTAS	1394.7	1397.5	1355.3	1375.0	1417.2	1439.7	1859.4	1135.0	-0.08
WAAREENER	3080.3	3087.1	3038.4	3059.3	3108.0	3135.8	3865.0	1863.0	-3.31
WIPRO	268.1	268.7	265.0	266.5	270.3	272.5	324.6	228.0	9.64
YESBANK	21.7	21.8	21.5	21.6	21.9	22.1	24.3	16.0	-3.30
ZYDUSLIFE	917.8	923.6	902.6	910.2	931.2	944.6	1059.1	795.0	-0.70

Disclosure & Disclaimer :

HDFC Securities Limited (HSL) is a SEBI Registered Research Analyst having registration no. INH000002475.

This report has been prepared by HDFC Securities Ltd and is solely for information of the recipient only. The report must not be used as a singular basis of any investment decision. The views herein are of a general nature and do not consider the risk appetite or the particular circumstances of an individual investor; readers are requested to take professional advice before investing. "This report may have been refined using AI tools to enhance clarity and readability."

Nothing in this document should be construed as investment advice. Each recipient of this document should make such investigations as they deem necessary to arrive at an independent evaluation of an investment in securities of the companies referred to in this document (including merits and risks) and should consult their own advisors to determine merits and risks of such investment. The information and opinions contained herein have been compiled or arrived at, based upon information obtained in good faith from sources believed to be reliable. Such information has not been independently verified and no guaranty, representation of warranty, express or implied, is made as to its accuracy, completeness or correctness. All such information and opinions are subject to change without notice. Descriptions of any company or companies or their securities mentioned herein are not intended to be complete. HSL is not obliged to update this report for such changes. HSL has the right to make changes and modifications at any time.

This report is not directed to, or intended for display, downloading, printing, reproducing or for distribution to or use by, any person or entity who is a citizen or resident or located in any locality, state, country or other jurisdiction where such distribution, publication, reproduction, availability or use would be contrary to law or regulation or what would subject HSL or its affiliates to any registration or licensing requirement within such jurisdiction.

If this report is inadvertently sent or has reached any person in such country, especially, United States of America, the same should be ignored and brought to the attention of the sender. This document may not be reproduced, distributed or published in whole or in part, directly or indirectly, for any purposes or in any manner.

Foreign currencies denominated securities, wherever mentioned, are subject to exchange rate fluctuations, which could have an adverse effect on their value or price, or the income derived from them. In addition, investors in securities such as ADRs, the values of which are influenced by foreign currencies effectively assume currency risk. It should not be considered to be taken as an offer to

sell or a solicitation to buy any security.

This document is not, and should not, be construed as an offer or solicitation of an offer, to buy or sell any securities or other financial instruments. This report should not be construed as an invitation or solicitation to do business with HSL. HSL may from time to time solicit from, or perform broking, or other services for, any company mentioned in this mail and/or its attachments.

HSL and its affiliated company(ies), their directors and employees may; (a) from time to time, have a long or short position in, and buy or sell the securities of the company(ies) mentioned herein or (b) be engaged in any other transaction involving such securities and earn brokerage or other compensation or act as a market maker in the financial instruments of the company(ies) discussed herein or act as an advisor or lender/borrower to such company(ies) or may have any other potential conflict of interests with respect to any recommendation and other related information and opinions.

HSL, its directors, analysts or employees do not take any responsibility, financial or otherwise, of the losses or the damages sustained due to the investments made or any action taken on basis of this report, including but not restricted to, fluctuation in the prices of shares and bonds, changes in the currency rates, diminution in the NAVs, reduction in the dividend or income, etc.

HSL and other group companies, its directors, associates, employees may have various positions in any of the stocks, securities and financial instruments dealt in the report, or may make sell or purchase or other deals in these securities from time to time or may deal in other securities of the companies / organizations described in this report. As regards the associates of HSL please refer the website.

HSL or its associates might have managed or co-managed public offering of securities for the subject company or might have been mandated by the subject company for any other assignment in the past twelve months.

Please note that HDFC Securities has a proprietary trading desk. This desk maintains an arm's length distance with the Research team and all its activities are segregated from Research activities. The proprietary desk operates independently, potentially leading to investment decisions that may deviate from research views.

HSL or its associates might have received any compensation from the companies mentioned in the report during the period preceding twelve months from the date of this report for services in respect of managing or co-managing public offerings, corporate finance, investment banking or merchant banking, brokerage services or other advisory service in a merger or specific transaction in the normal course of business.

HSL or its analysts did not receive any compensation or other benefits from the companies mentioned in the report or third party in connection with preparation of the research report. Accordingly, neither HSL nor Research Analysts have any material conflict of interest at the time of publication of this report. Compensation of our Research Analysts is not based on any specific merchant banking, investment banking or brokerage service transactions. HSL may have issued other reports that are inconsistent with and reach different conclusion from the information presented in this report.

Research entity has not been engaged in market making activity for the subject company. Research analyst has not served as an officer, director or employee of the subject company. We have not received any compensation/benefits from the subject company or third party in connection with the Research Report.

HDFC securities Limited, I Think Techno Campus, Building - B, "Alpha", Office Floor 8, Near Kanjurmarg Station, Opp. Crompton Greaves, Kanjurmarg (East), Mumbai 400 042 Phone: (022) 3075 3400 Fax: (022) 2496 5066

Compliance Officer: Murli V Karkera Email: complianceofficer@hdfcsec.com Phone: (022) 3045 3600

For grievance redressal contact Customer Care Team Email: customercare@hdfcsec.com Phone: (022) 3901 9400

HDFC Securities Limited, SEBI Reg. No.: NSE, BSE, MSEI, MCX: INZ000186937; AMFI Reg. No. ARN: 13549; PFRDA Reg. No. POP: 11092018; IRDA Corporate Agent License No.: CA0062; SEBI Research Analyst Reg. No.: INH000002475; SEBI Investment Adviser Reg. No.: INA000011538; CIN - U67120MH2000PLC152193

Investment in securities market are subject to market risks. Read all the related documents carefully before investing.

Mutual Funds Investments are subject to market risk. Please read the offer and scheme related documents carefully before investing.

Registration granted by SEBI, membership of BASL (in case of IAs) and certification from NISM in no way guarantee performance of the intermediary or provide any assurance of returns to investors.